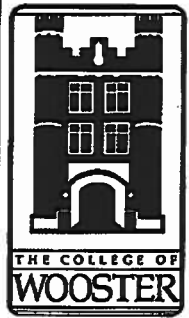
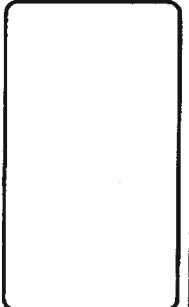
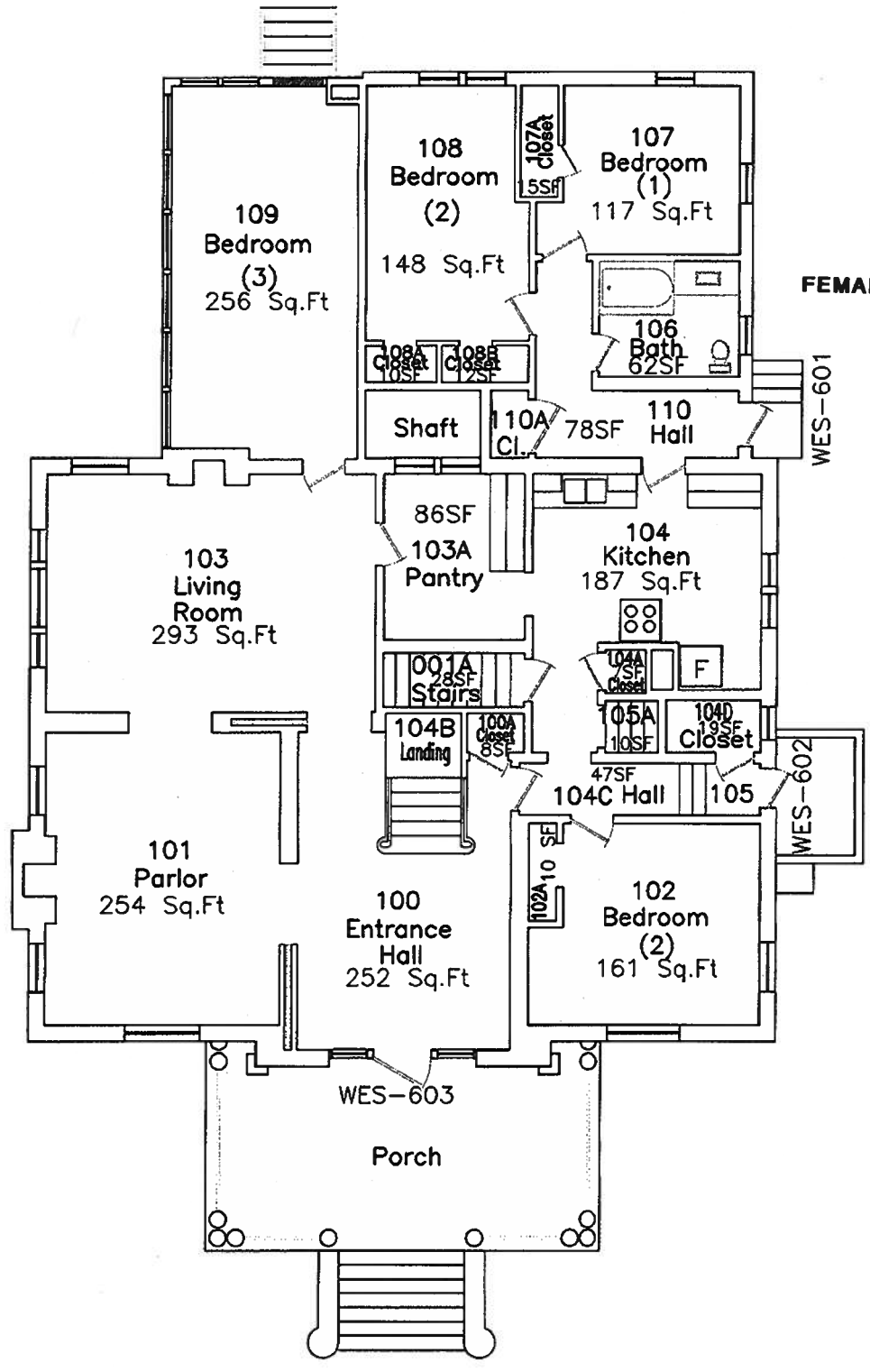


Mar. 2004		
BINDER	1 OF 4	
1:10		
No.	Revision/Issue	Date

WESTMINSTER
COTTAGE
904 Beall Ave.

BASEMENT



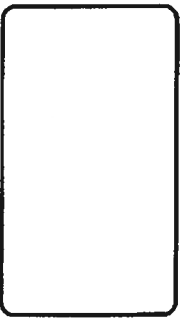


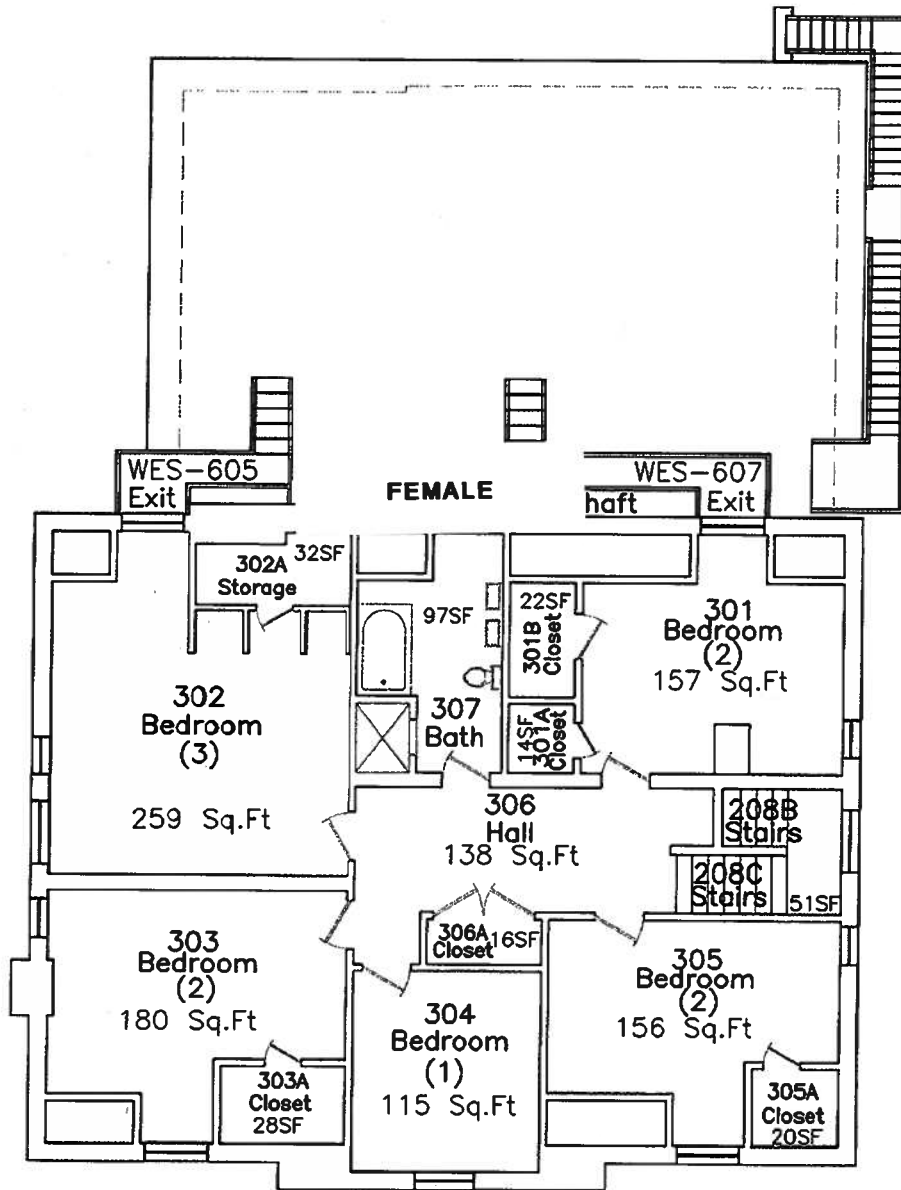
FEMALE

Mar. 2004	
BINDER	2 OF 4
1:10	
No.	Revision/Issue Date

**WESTMINSTER
COTTAGE**
904 Beall Ave.

**FIRST
FLOOR**





Mar. 2004		
BINDER	4 OF 4	
1:10		
No.	Revision/Issue	Date

WESTMINSTER
COTTAGE
904 Beall Ave.

THIRD
FLOOR

